



To Fly Free in Space: At about 100 meters from the cargo bay of the space shuttle Challenger, Bruce McCandless II was further out than anyone had ever been before. NASA Photo.

Surf Notes:

The surf has been flat this summer. Usually this time of year we get plenty of south swell coming up from the southern hemisphere but the storm track has been dead except for a medium size bump this last week end.



Last year this time was a far different story, the south swell was definitely happening. I was lucky to be outside with the pack at Lymen's Point waiting for the larger set waves, when one giant loomed on the horizon..... Page 2

Antigravity Research:



Advanced Civilizations:



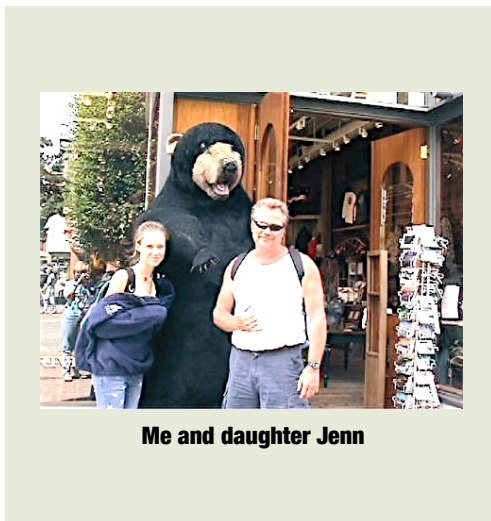
Physics - Notes, Articles, and Interpretations

The Standard Model of Quantum Physics

"The Standard Model describes our understanding of the fundamental particles in the context of three of the four fundamental forces of nature: the strong, weak and electromagnetic forces. Its building blocks are illustrated schematically in Figure 1.2. In the Standard Model, all interactions arise from the exchange of elementary particles, called gauge bosons. The electromagnetic force results when charged particles exchange photons (a).

The strong force, which holds together protons and neutrons, comes from the exchange of gluons (g). The weak force, which explains radioactive decay, arises from the exchange of W and Z bosons. The W and Z are massive, unlike the photon and gluon;

their mass is responsible for the weakness of yet-unobserved Higgs boson. The W and Z acquire mass by coupling to the Higgs.



Me and daughter Jenn

the weak force. Even the simplest explanation for their mass requires a new particle, the as-

The matter particles in the Standard Model are called quarks and leptons. Quarks carry strong charge, and leptons do not. The quarks and charged leptons also gain mass by coupling to the Higgs. Quarks interact through all three forces. Because of the strong force, quarks are always bound in groups called mesons (quark-antiquark pairs) or baryons (quark trios). There are six quarks, called up, down, charm, strange, top and bottom. The quark masses range from a few MeV (for the up and down quarks) to 174 GeV (for the top).....Page 3.



SURF NOTES:

Everyone in the pack started paddling as hard as possible trying to get in position for this outside set, I was the furthest person out so I scratched hard directly for the peak of the wave and decided to let everyone inside go for that wave. There was no guarantee that there would be another wave so it was a risk. Fortunately, the next wave was even a bigger monster and was already bowling up and feathering blowing spray off the top of the wave.

I paddled directly for the peak so I could set up for



EARLY YEARS, SURFING AT PV COVE

Surfing is sure a lot of fun, and I wanted to share some pictures of surf spots from where I grew up in Palos Verdes, California.

The top two photos are of the left break at the middle main reef at the Palos Verdes Cove. There are three breaks at the cove, Indicators a left break (The bottom 2 left pictures are of Indicators reef that is off of the left side of the bay), the central reef

taking off exactly in the pocket of the wave. Turning around at the last minute I totally went for it and took off looking down the wall and seeing all these surfers out in front of me. At that moment I knew that I had no choice I had to go for it and not worry about everyone in front of me. I was really stoked because this wave just lined up all across the bay and was really an incredible ride...

When I paddled back out towards the break zone my surfing buddy yelled at me and said, "Hey John," and I said "what?" "You caught the biggest wave of the summer. That was a double over head wave!" I said, "No way Brah!"

I managed to snag a few more outside sets that day, but there was nothing that compared with that wave. I will try to take some pictures of my local Hawaiian breaks. A few secret spots I will keep to my self, but if I can take some photos I will post them.





which is the main break, and Ski Jump (below top two pictures) 'rock' and inside little reef are lined up on the far right side of the bay. While the left side next to the middle reef is the channel

Summer is often flat but does break similar to Waikiki, and was called 'Little Waikiki' when surfers from Hawaii discovered the PV Cove and started the surfing revolution that took off in



(boneyards left side of channel) which becomes a huge river heading back out to sea during big surf.

The cove gets big as you can see from the top photo of Indicators, and I have ridden the cove when it is at least triple overhead which still are the largest waves that I have ever surfed. Been knocked out several times there fortunately only saw stars and did not go unconscious (back then we didn't wear leashes), the wave is thick and powerful during the winter north swells.

California. Some of the early pioneer surfers included the likes of Doc Ball (Doc Ball surfed into his '80's and I saw years ago a burgundy covered book that he produced that had a collection of black and white photos of 50 foot waves at PV Cove & Long Beach Harbor-before they built breakwater!), and LeRoy Grannis (LeRoy in right picture) surfed the PV Cove on a regular basis.



©Gavin B. Thompson

The leptons do not feel the strong force, so they always appear individually. The charged leptons interact via the weak and electromagnetic forces. There are three such leptons, the electron, the muon (μ) and the tau (δ). The charged lepton masses range from 0.5 MeV (for the electron) to 1.8 GeV (for the tau). The three charged leptons have neutral partners called neutrinos. In the Standard Model, they are massless.

The Standard Model has been dramatically confirmed by precision measurements carried out at laboratories around the world. But recent experiments have revealed a crack: Neutrinos have mass, something that cannot be explained by the minimal Standard Model. Moreover, theorists have demonstrated the Standard Model itself is mathematically inconsistent – unless a Higgs particle (or something else) appears at the TeV scale, an energy we are just beginning to probe. These two mysteries will guide the first steps of our journey to understand the nature of matter, energy, space and time. “

GOVERNMENT REPORT-SOURCE:

home.fnal.gov/~dcc/btev/hepap_report.pdf

HIGGS, BECS, & SUPERSYMMETRY

“Theoretical physicist Hitoshi Murayama is an optimist. Contemplating a discipline that many think is fragmenting into ever more pieces, like a smashed vase with shards labeled “dark energy,” “antineutrinos,” “hidden dimensions,” “charge-parity violation,” “supersymmetry,” and the like, Murayama sees physics coming together instead.

It may not be a serenely classical coming-together, restoring the fractured vessel of physics to a seamless work of art. Nevertheless Murayama, who is a member of Berkeley Lab's Physics Division and a professor of physics at the University of California at Berkeley, foresees an approaching “synergy at the TeV scale,” the experimental and theoretical regime where energies – and masses – are measured in trillions of electron volts. (The mass of subatomic particles is routinely expressed in electron volts, a number understood to be divided by the speed of light squared. The mass of the proton is given as .938 GeV, for example, just under a billion electron volts.)

“Any of these interesting physics topics must go through the TeV scale before they can reach their own destinations,” Murayama says. Experiments at the TeV scale, along with the theories that motivate them and will hopefully explain their outcomes, are “a hub where everybody has to transfer to another flight.”

Up, Down, and Sideways – and Heaven and Hell

To talk about physics at the TeV scale, Murayama arranges myriad distinct problems into four groups. “Horizontal” problems deal with relationships among the three families of quarks and leptons, particles known as fermions. The families are similar except for their masses and are distinguished only by their so-called “flavors.” Questions include what determines the masses of these particles; why neutrinos have any mass at all (yet so little!); and how the disparity between matter and antimatter in the universe originated.

“Vertical” problems deal largely with the particles known as bosons, which carry forces like electromagnetism and the weak force. For example, why does electric charge reduce to the same unit, that of the electron or proton? (True, quark charges are measured in one-third or two-thirds of that unit, but quarks are never found in isolation.) Can all these forces – the electromagnetic force carried by photons, the strong force carried by gluons, the weak force carried by Z and W bosons, and much weaker gravity, carried by the yet-to-be-found graviton – ever be described by a unified system?

Many (not all) horizontal and vertical problems have been a mainstay of physics since the promulgation of the Standard Model over 30 years ago. Especially within the last decade, however, new kinds of questions have arisen, what Murayama calls “questions from heaven” and “questions from hell.”

Questions from heaven are cosmological: what is dark matter? What is dark energy? It's odd that the density of dark energy in the universe is only about twice the density of ordinary and dark matter plus ordinary energy; by cosmological standards that makes them almost equal. Why do we live at a time when the opposing pressures of matter and dark energy balance so neatly?

Questions from hell are just as “dark” but different: why is there anything at all in the universe? If mass and energy are equivalent, asks Murayama, “Why do particles have energy when they are just sitting around?”

Particles derive their mass (thus their energy) from a dark field that fills the universe. Murayama emphasizes that, while we have given it a name – we call it the Higgs boson – we don't know what it is. (Physicists often use the name of a field and its characteristic boson interchangeably, as in the Higgs field and the Higgs boson or bosons). When the curious potential of the Higgs field is plotted on a graph, it resembles the inside of the bottom of a wine bottle. “That's the hell we are in,” says Murayama, “the bottom of the bottle.”

Murayama points out that because of its strange potential, the Higgs field appears to behave like a quantum-mechanical curiosity known as a Bose-Einstein Condensate, or BEC. “A BEC is what you get when you cool a collection of particles, such as atoms, below some critical temperature,” he explains. At this point they begin to behave as a single wavelike entity, a “quantum liquid” with peculiar properties. Liquid helium is such a condensate, which climbs out of any container it's put into, defying gravity, “because it somehow ‘knows’ that outside the container it can reach a lower potential energy.”

Superconducting materials represent another form of condensate, in which cooled electrons form pairs that slide through the atoms in a crystal without resistance. Superconductors repel magnetic fields beyond a shallow penetration depth, which is why a superconductor levitates in a magnetic field. The Higgs field has an analogous effect on the weak force: the weak force, unlike the long-range forces of gravity and electromagnetism, is carried by massive bosons and can act only over short distances, as if it were being repelled by a BEC.

Higgs field is intimately relate”Apparently we are living in a Bose-Einstein Condensate in which all particles are immersed. If we turned it off, mass would vanish and everything would fly apart in a nanosecond,” Murayama says. “With atoms, you know what you started with to create a BEC, but the BEC in the universe, the Higgs field, is already there. We'll be able to use the next generation of

accelerators to pump in energy, in hopes of seeing what the Higgs is made of."

Although Murayama refers to questions about the Higgs field as a "hell" problem, he concedes that "it could come from the heavens. Our keen interest is to understand the origin of the universe, with which the Higgs field is intimately related. New clues may come from learning more about dark matter and dark energy."

Harrowing Hell

Whether from heaven or hell, the next steps in the inquiry require investigations at the TeV scale. The most attractive candidates for dark matter are weakly interacting particles whose estimated masses range widely, from at least a 30th of a TeV to a 10th of a TeV or more. The mass of the Higgs boson or bosons, depending on their nature, has been estimated to be a 10th of a TeV at minimum.

To create particles this heavy will take the most powerful accelerators ever built. After CERN's Large Hadron Collider (LHC) switches on in 2007, it will soon collide two beams of protons accelerated to 7 TeV, adding up to a center-of-mass energy of 14 TeV.



Colliding protons

amounts to colliding bags of quarks, so the exact energy of any given quark-quark collision is inherently uncertain. Physicists hope to follow the LHC within a few years with an International Linear Collider (ILC) capable of colliding beams of electrons and positrons at a center-of-mass energy of 1 TeV, because these are leptons, point particles, the ILC will be able to explore many phenomena with a precision unobtainable by the LHC.

At first glance, hell — that is, the Higgs field — might seem to be inaccessible to study. If the Higgs boson is an ordinary particle whose mass is some fraction of TeV, it will repel itself just as the electron does. This means that the interaction of the Higgs with other particles couldn't be studied at anywhere near

the short distances at which particles interacted in the early universe, the intimacy required for a Bose-Einstein Condensate.

But just as the theoretical proposal and subsequent discovery of antimatter — specifically the electron's antiparticle, the positron — made it possible to understand how electrons were able to come close together despite charge repulsion, the notion of supersymmetry may make the Higgs field easier to understand. Just as antimatter did for ordinary matter, supersymmetry doubles the number of fundamental particles in the game.

The quantum-mechanical process by which virtual pairs of antiparticles, electrons and positrons, constantly wink in and out of existence causes annihilations among these particles, which cancel much of the electron's self-repelling energy; thus the extra energy needed to study electron interactions is easily reached by today's accelerators.

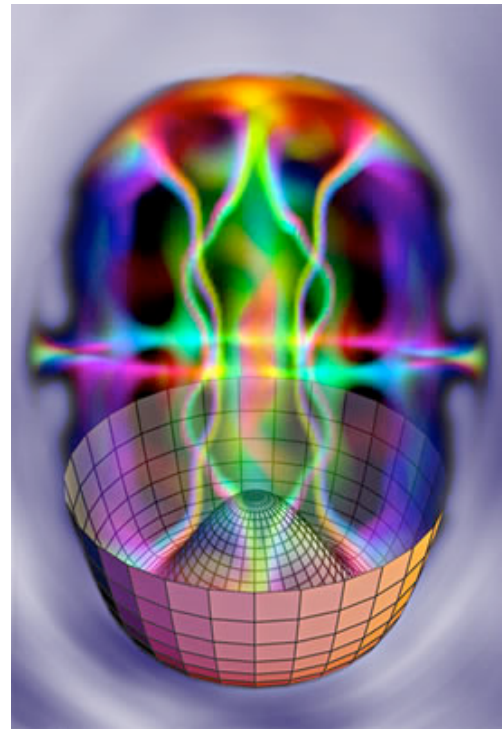
Likewise, supersymmetry suggests there is a partner for every known ordinary particle, including the Higgs boson. If the self-repelling energy of the Higgs is cancelled by its superpartners, the Higgs interactions, including self-interactions, will be accessible to TeV-scale accelerators like the LHC and the ILC.

Supersymmetry is not the only theory to be tested by the LHC. Instead of extra particles, there may be extra "large" dimensions of space, which have been proposed to explain why gravity is so much weaker than electromagnetism or even the short-range weak force. The idea is that gravity only appears weak. All the other forces are confined to our familiar three dimensions of space, while the strength of gravity is diluted by acting in four or more dimensions.

Extra dimensions would reveal themselves in TeV-scale particle collisions because not all the particles that should be there will be; some, namely gravitons, will have escaped into the extra dimensions. If so, scientists will be able to find out how many extra dimensions there are simply by measuring the rates of such events in the ILC.

SOURCE FOR MURAYAMA DOCUMENT:

<http://www.lbl.gov/Science-Articles/Archive/sabl/2006/Jan/04-TEV-pt1.html>



Is this a vision of hell? The Higgs field, responsible for the mass of all particles, fills the universe as a Bose-Einstein condensate, or superfluid. A graph of the field's potential takes the shape of the bottom of a vortices in a rotating Bose-wine bottle, suggesting a metaphorical hell. (Visualization of Einstein condensate by the National Institute of Standards and Technology)"



above TEV and frequencies of light...it is the fourth dimensional power source).

largest scale 'energy' becomes smallest inner most scale. An inverse scale mirror of greater order, and all of these scale energies/ waveforms would annihilate with antimatter pairs as the reverse portion of current. Mass regeneration is very complex...and I am certain that there is exact mathematical repetitions that appear as a unified

Also, I think that an inverse order prevails...from top to bottom frequencies that would be layered as part of greater linkage to our hyperdimensional universe power structure...with in the atom. So, we might

I will discuss BEC and Higgs field, and will finish post later...[took a break now I am back] Both of these above documents are very important summaries of the 'Standard Model' and problems with the existing theory, i.e., such as Neutrino's having a mass, which is further explained in the Murayama document that attempts to reveal possible solutions with 'Standard Model' bigger picture of how "The Higgs field, [IS] responsible for the mass of all particles, [AND] fills the universe as a Bose-Einstein condensate, or superfluid."



The Murayama document is cutting edge thinking, and I find that although there still is the "early universe" big bang mentality programming this model that his explanations are the best I have seen so far. What I would like to do next is to explore TVF model of multiple scale universe and 'how duplications' work with the 'Standard Model' with in each scale, and then take my theory of imbedded lower frequency scales as a cascade with inverse mirroring of larger scales particle/energy interactions as a hyperdimensional duplicated 'Standard Model' with in each scale and show sypersymmetry as a balanced state of forward/reverse rotational motion, creating polarity, zero points, and the 'cause' for entire Universe.

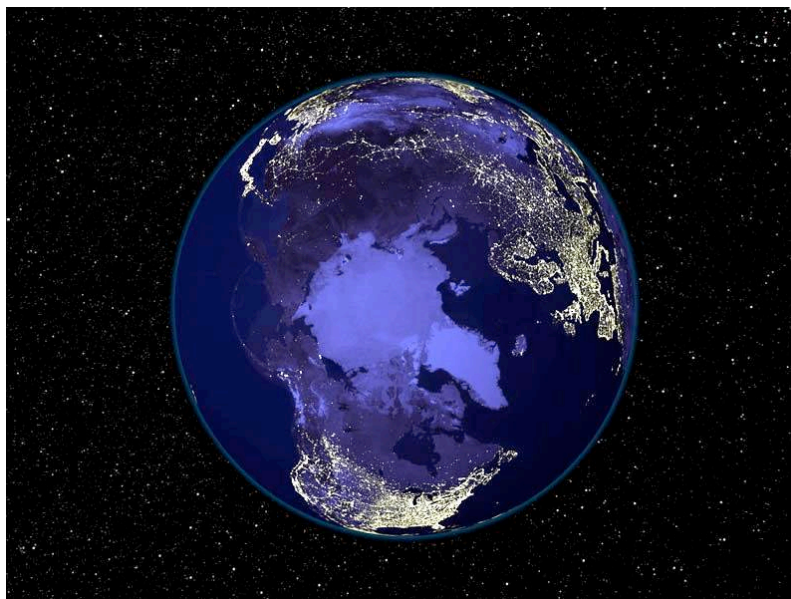
glimpse 'greater order and shape of universe' but will not be able to see these extreme frequencies beyond light as this geometry within atom will reveal greater symmetries of these outer regions of our all encompassing scales(each one imbedded in the other, and then inverse order larger becomes smaller within atomic scale) as they are represented in a top to bottom reverse order so that highest

structure...expanding this structure towards an infinity.

PHOTO'S FROM NASA

John W. Rickey

First impressions are that similar ideas are brewing regarding BECS, HIGGS FIELDS (Murayama says..."If we turned it off, mass would vanish and everything would fly apart in a nanosecond,"...), missing GRAVITON (dissappears into another dimension....actually it is FTL and has to operate at significant ENERGY LEVELS



ARE FTL GRAVITONS THE SOURCE FOR ELECTRICAL FIELD INTERACTIONS AND MAGNETISM?

Everything from MASS [Graviton powered], CMB radiations [CMB FTL interactions and absolutely does not indicate Big Bang early universe]to plasma fields [electrical nature of Universe] are all related to electromagnetic interactions, yet science does not recognize that the Graviton is a possible source circuit for all force carriers in this dimensional scale and is the primary source for all of these electromagnetic interactions. There is no 'free lunch,' and some source must be powering the UNIVERSE, but what?????



THE GRAVITON [BEC-wave FTL system wide TVF motion,

POWER - instant system wide power source for all atomic activity]

Is the Graviton the FTL electron powering our visible Universe?

For mass regeneration in this spectrum of electromagnetic energy to take place a circuit must be completed. It is my conclusion that the Graviton [negative charge], as formed from collapsing FTL Aether Frequencies that form Graviton Currents completes a circuit into lower C frequencies of Mass and this demodulation of Graviton energy that is rectified within the circuit powers the atom, spin, and quantum forces. The exit wave [FTL CIRCUIT] from mass [Stoat-shadow reverse motion could actually form a much reduced reverse current against forward time motion] then is the Anti-Graviton [positive charge] Currents that complete the circuit as a flux dynamic of greater Universe circulations [FORWARD TIME-momentum/motion is towards the positive pole]. The negative/positive charge aspects of electrical activity within MASS in visible UNIVERSE terminates to an Aether source charge FTL dielectric just like in a battery only in the case of the Graviton as compared to the Electron it operates at faster then light frequencies/speeds transferring momentum and maintaining spin rates.

ENERGY CIRCUITS OF GREATER UNIVERSE

In a hyperdimensional multiple scale Universe the sub scale-space systems would operate off of a cascade of plasma electrical type circuits. In this case the Aether plasma fields collapse into our scale creating gravitons [plasma condensate forms graviton with larger mass then aether particle]. This collapsing reaction around mass creates an instantaneous BEC gravity wave that is universal with TVF motion, and the circuit terminates in the nucleon of the Atom. The completion of the graviton circuit creates an 'FTL' gravitostatic field around all mass and atom similar to the electrostatic field between polar opposites, and generates inside nucleon an outwards branched plasmoid dipole with internal twisted plasma forming a micro annihilation zero point between the return reverse Anti-Graviton circuit.

VIRTUAL ELECTRONS - The electron also is negatively charged and is formed as a condensate from FTL local gravitostatic fields. This is new territory here but, sub atomic particles come into and out of existence whereas atoms do not. Because electron and graviton fields are both negatively charged high electric fields can generate an antigravitational force as they push against each other, also high negative capacitance is accelerated by the FTL gravitostatic force vector creating motion towards the positive pole [Same effect in MAGNETISM, ferromagnetic effect-aligned electron circular currents create magnification revealing at lower levels of 'C' distortion of vector lines of force from the Gravitostatic Field].

Because power source is always 'on' plasmas are a natural source for VIRTUAL ELECTRONS.

SELF SUSTAINING PLASMAS - We are finding out that this 'extra' energy from so many experiments with plasmas is from an outside EM source, The VIRTUAL ELECTRON. Here is an example of a recent study on SELF SUSTAINING PLASMAS:

"A new phenomenon of a high frequency electron beam modulation was discovered by researchers of the Plasma Lab. of the Physics Department of Technion while investigating the ferroelectric plasma cathode which emits electron beams. Namely, a density of

electrons in the beam alternates in time almost sinusoidally; an amplitude of this density oscillations reaches 100%. It is supposed that the processes in the plasma situated in the cathode are responsible for these density oscillations. There is no satisfactory theory of this phenomenon up to present. This project is an attempt to build a model in a first order approach. The main goal of the presented model is the determination of the range of the plasma parameters in which the high frequency beam modulation is possible and to compare the acquired results with the results obtained in the experiments."

".....To obtain a positive feedback, an additional element has been introduced. It has been found experimentally that the positive feedback is achieved by the coaxial feeder, which is connected to the front electrode of the ferroelectric sample and provides it with driving pulse. This feeder perceives the electromagnetic field, which is generated by the electron beam (output signal) and transmits this electromagnetic field into FPC as an input signal. If the input signal enters the system in the proper phase, it causes the growth of the oscillations amplitude of the emitted electrons."

[http://physics.technion.ac.il/~konst/Notes/Physical model](http://physics.technion.ac.il/~konst/Notes/Physical%20model)

ULTRACONDUCTORS:

Will polymerized strands of ultraconductors replace copper wiring? Here is a company that has invented a process whereby they have locked in by an ionization process electric channels into hardened polymers forming room temperature superconducting materials:

"Ultraconductors, which exhibit superconducting properties at ambient (room) temperatures. These materials are claimed to conduct electricity at least 100,000 times better than gold, silver, or copper"

http://ultraconductors.com./bbb_pg_3.html

"Ultraconductors are the result of more than sixteen years of prior scientific research, peer reviewed publication, independent laboratory testing, and eight years of engineering development.

From an engineering perspective, Ultraconductors are a fundamentally new and enabling technology. They are lightweight, flexible, transparent, and possess magnetic, electric, and electronic properties of exceptionally high commercial value.

Ultimately, Ultraconductors will offer unprecedented high performance and energy efficiency throughout a very broad range of products.

These applications will include:

- Electric power products (Power downloads, motors, generators, transmission lines)
- Electronics (microelectronic circuits and components, computer chip mounting, antennas)
- Medical (MRI systems, sensors, specialized instruments)
- Electromagnetics (energy storage, shielding)"

<http://ultraconductors.com/products.html>

MAGNETIC FIELD GENERATORS - WITHOUT LENZ BREAKING

Here is a company that has made a break through in electric generation by rotating magnetic fields with no moving parts that creates a self sustaining without current loop back field interference source of VIRTUAL ELECTRONS:

Magnetic Power Inc's mission is to supply the world with clean, abundant, and inexpensive electricity.

"The company is developing technology it calls Magnetic Power Modules™. Based upon proprietary breakthrough discoveries in MPI's labs, Magnetic Power Modules are being designed that operate continuously, without fuel, extracting electricity by

converting an abundant, renewable energy source that exists everywhere in the universe. The process will create no pollution. The cost of electricity is estimated to be significantly less than any competing form of power generation today or in the foreseeable future."

<http://www.magneticpowerinc.com/index.html>

In summation, the GRAVITON is not the weak force it is the SOURCE of all the forces including electricity. If the GRAVITON is an FTL particle which I believe that it is then it also has a frequency that operates at significant ranges of frequencies above that of light. Otherwise, we would be able to see the motion of GRAVITONS. There are so many misconceptions regarding the power structure of our UNIVERSE that academia is no doubt having a very difficult time trying to patch together existing theories in order to make the data fit.

John W. Rickey

RECIPROCAL MOTION UNIVERSE, HIGGS FIELDS, ELYSIUM, AND TVF GRAVITON:

So what is the force that powers atoms, creates galaxies, and binds all matter; and, if that force suddenly disappeared would matter in our visible isotropic universe still exist?

My answer to that question would be NOTHING could exist period without a circuit being completed powering all imbedded mass/scales within the larger rotational aspects of UNIVERSE. Nothing can exist without a hierarchy of principles, a hierarchy of energies, and a hierarchy of frequencies of waveforms that make up all the particles that form mass within imbedded scales within a Universe; that everything exists in reciprocal motion not only around centers but that all motion is caused by the exchange of energies in a constant balanced state between a forward and reverse wave circuits at all levels in all scales....The problem is 'cosmological constants' are ill defined,

have zero connection to any reciprocal motion other than a faith based principle that states simply that 'space expands' and 'dark energy' exists to explain 'red shifts' and this apparent expansion. The other problem with both quantum theory and Big Bang cosmological models is that again we do not recognize any power source for exchanging momentum and maintaining the integrity of mass in motion, we do not recognize faster than light energies, we do not recognize that FTL energies most likely operate at significant frequencies above the light spectrum and that is why we cannot see these particles in motion...

There is a lack of cause and effect relationships in existing theory, and the bias in academia is unfortunate and totally lacks any freedom to think beyond a belief system that Universe just exists with no apparent rotation around a center in its isotropic state,[small view limits ability to see big picture] and that space expands because of the Big Bang which was caused by what? The only cause and effect relationship for balancing 'Universe gravitational collapse' [what is cause of gravity??? Certainly not curved space] between 'expanding space' and 'collapsing galactic planes,' is a dual motion multi-scale super-symmetric balanced motion between forward and reverse large scale multi-spectrum union of opposites in reciprocal motion around each other, not a BIG BANG.

The BIG BANG is logically impossible, and as far as I am concerned a dead issue not really even worth discussing.

Let's get on with it and get into the real nuts and bolts of how our Universe really works. So, in review TVF Model is the best view of Universe that we have right now because two factors, 1) Speed of Graviton in Pushing Gravity makes us look at possible frequencies above light as factor in defining motions in Universe. 2) Multiple-Scale Universe that is even more important an understanding because that defines a wrap around for the quantum theories on a three dimensional basis and makes the fourth dimension a conduit attached to a hierarchy. Back to

HIERARCHIES, hierarchies of scales, energies, spectrums. We now are unstuck....So, going from a stuck view to an unstuck view is a good thing. It means that we can now see how a Universe can have structure on large scales.....

The existing visible three dimensional Universe is very small view and does not show the rotation required to maintain this scale which I believe is going to be at a very high rate due to our scale being imbedded in the higher scale that creates the Gravitons. The HIGGS Field operates FTL & HFTL [higher frequencies than Light],



back to hierarchies again and the Elysium most likely is a HIGGS type field and maybe the lines of force that allows light to spin around [charged particles spin around lines of force when in motion]. The notion that particles are mass-less and carry zero charge is also false because of super-symmetry. All particles even neutrons [anti-neutrons] carry some sort of charge and have mass.

Well, there is a crack that is widening and physicists are waking up as noted in the above treatment on future thinking about Quantum Physics by Murayama regarding all mass being maintained by this liquid HIGGS field a BEC. I think we are finally getting somewhere, okay here is the deal Supersymmetry fits exactly with a reciprocal motion model of Universe. We just have to merge this now with multiple spectrum multiple scale Universe model, with largest scale smallest HFTL fields of particles and that every other scale is a cascade [imbedded within parent scale] of collapsing high frequencies towards 'holes' lower frequencies. This cascade keeps going down the scales of frequencies like a hierarchy that is a balanced circuit that 'switches' in a constant state of

regeneration between forward wave incoming and reverse wave outgoing to complete circuit. This switching takes place at three trillion times per second in our scale and fits perfectly with TVF model of Graviton.

TVF Pushing Gravitons, transparency equivalence model shows that all mass is equally being impacted by these smaller scale particles that have a relative short range but travel at extreme speeds approaching $2 \times 10^{10} c$, or 20 billion x the speed of light. The question now is where do these ultra small waveforms originate from, and why are they so small and how in fact do these 'impacts' affect all atomic scale structures? It is

a big question, here is why:

Because if Gravitons exist and operate FTL then this finally gets physics going in the right direction away from limits on speed of motion, and separates classes of matter into a hierarchy of scales. Mirror Universes, Supersymmetry, HIGGS FIELDS, Elysium, and a few new ideas such as 'HF-FTL Gravitostatic Fields' will now complete the picture of how our Universe functions and how all mass is maintained in a constant regenerative state.

John W. Rickey

SCIENCE JOURNAL POSTS WERE ORIGINALLY POSTED ON **TOM VAN FLANDERN'S** SITE, TO READ COMPLETE POSTS AND LATEST METARESEARCH ON '**WHY SPEED OF GRAVITON IS FASTER THEN LIGHT**' CLICK ON FOLLOWING LINKS:

JOHN'S POSTS AT METARESEARCH.ORG

METARESEARCH.ORG